



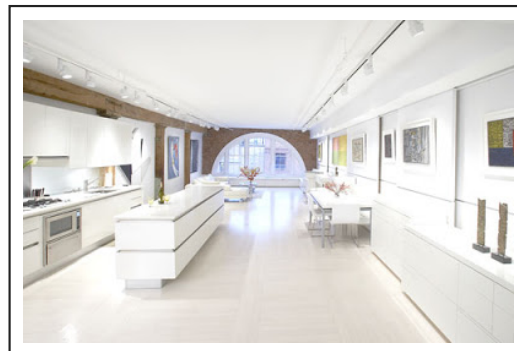
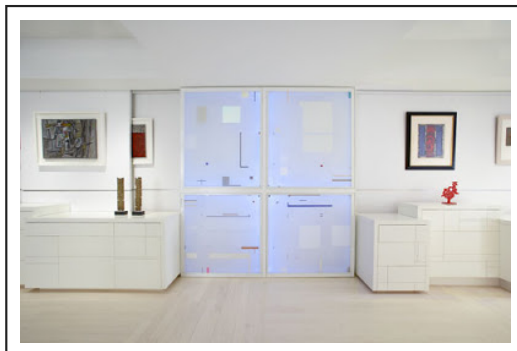
Tuesday, February 10, 2009

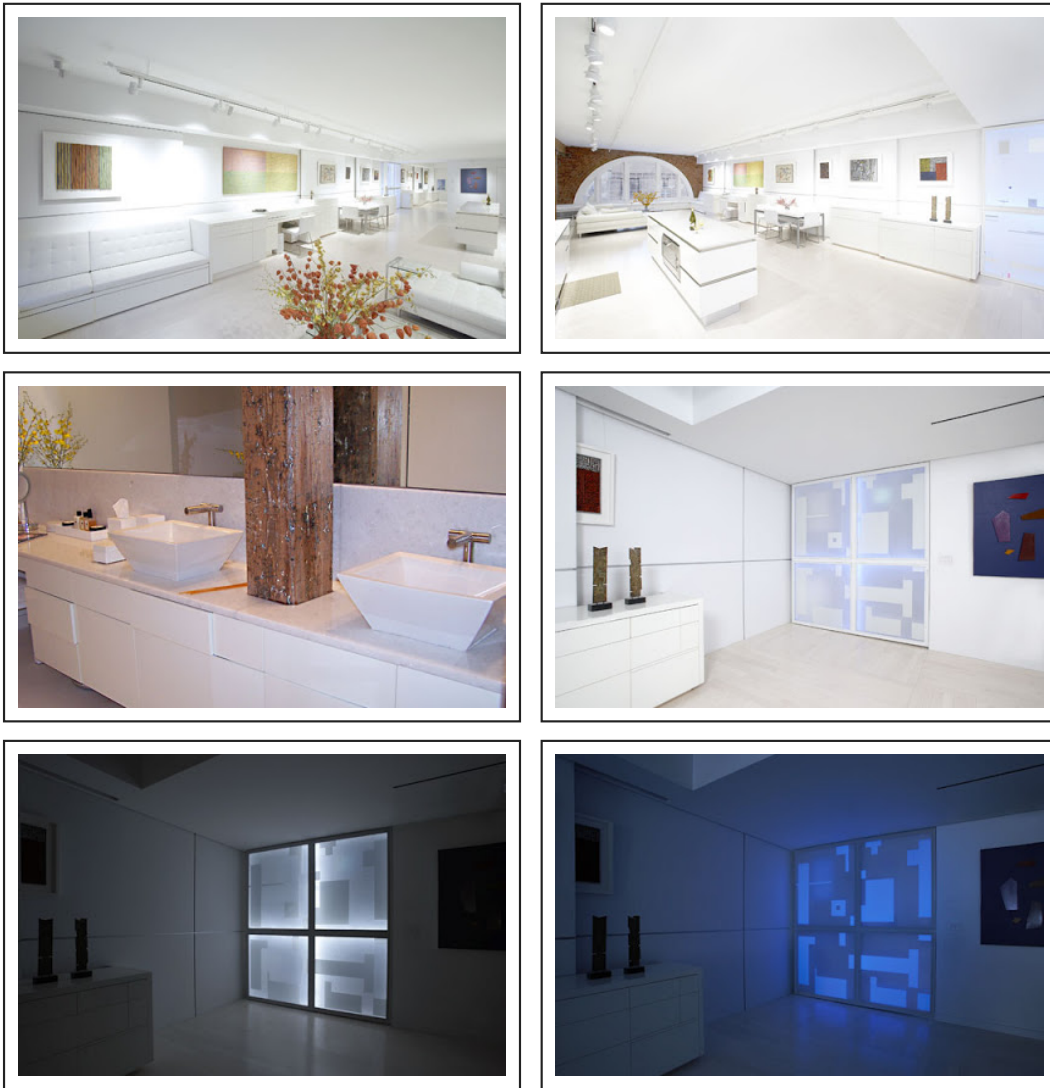
milne / ojito RESIDENCE - New York, NY

Milne / ojito RESIDENCE - New York, NY. show description view video. The clients, Anne Milne and Jacob Ojito, asked I-Beam Design to invent a new kind of ...By exploding the matrix throughout the space and using its lines to generate various programmatic interventions, the art and architecture were set in dialog.



The harmonic progressions radiate out from the origin point to generate a variety of spaces including a guest bedroom, a home decorator entertainment center, an office, an open dining area, numerous cabinets and moving exhibition panels to accommodate an evolving art collection. A prime example of this may be seen in the temporary guest bedroom which appears by opening a dfs sofas bed that in turn releases a cantilevered wall which swings out to privatize the bed area while projecting the matrix into space. The only permanent enclosure in the loft contains closets and a new Guest premier baths to Bathroom made of acid etched mirror, which gives the impression of expanding space and suspended gravity. The apartment is nearly void of doors except for Waltemath's hearth piece and a glass Duchamp Door that closes off the shower room as it opens the bathroom to the bedroom.





The 1900 square feet loft has windows to the East and West, leaving the middle section and origin point in shadow. Ms. Waltemath wanted to activate this area: "I decided to illuminate the moving panel in the center of the space to become in effect a cold hearth. I started my harmonic progressions from the center of the panel, which was also the center point of the wall section framed by a long hallway when seen from the point of entry." Ms. Waltemath consulted Linnaea Tillett of Tillett Lighting Design Inc., who frequently collaborates with artists to create artworks with integrated lighting. Ms. Tillett, who has 25 years of experience in architectural lighting design, proposed a combination of phosphorescence and L.E.D technology. "This cold hearth consists of 8 distinct panels (4 quadrants on each side) "made of clear and colored acrylic panels with L.E.D. lights hidden behind a white powder-coated aluminum frame. Phosphorescent acrylic sheets allow the work to reflect day and nighttime conditions and glow cerulean blue in dim light". The hearth, like the rest of the design, achieves grace and dynamism by employing a subtle pallet of whites and light as a means to render form and expand space.

Architect: [I-Beam Design](#)

Decorators Home

